

DOOR FRAME

DOOR SHUTTER

DOOR FRAME:- A DOOR FRAME IS AN ASSEMBLY OF HORIZONTAL AND VERTICAL MEMBERS FORMING AN ENCLOSURE TO WHICH THE DOORS ARE FIXED.

DOOR SHUTTER:- THESE ARE THE OPENABLE PARTS OF A DOOR. IT IS AN ASSEMBLY OF STILES, PANELS AND RAILS.

TOP RAIL - THE TOP RAIL IS THE HORIZONTAL PIECE THAT SITS ACROSS THE VERY TOP OF THE DOOR.

FREEZE RAIL - SIMILAR TO THE TOP RAIL, EXCEPT IT SITS HORIZONTALLY ACROSS THE NEXT DIVIDE BETWEEN THE PANELS ON THE DOOR. THIS IS OFTEN AT EYE HEIGHT AT NOT ALL DOORS HAVE A CROSS RAIL.

MIDDLE RAIL - SITS HORIZONTALLY ACROSS THE MIDDLE OF THE DOOR. NOT ALL DOORS HAVE A MIDDLE RAIL.

BOTTOM RAIL - SITS HORIZONTALLY ACROSS THE VERY BOTTOM OF THE DOOR. THIS IS THE COLLECTIVE NAME FOR THE VERTICAL COMPONENTS THAT SITS ON THE OUTSIDE EDGE OF THE DOOR.

LOCK STILES - THIS IS THE VERTICAL EDGE OF THE DOOR WHICH SITS ON THE OPPOSITE SIDE OF THE DOOR HINGES, AND CONTAINS THE LOCK OR LATCH.

PANEL - THE PANELS, WHICH MAY BE TIMBER OR GLASS, ARE WHAT FILL THE FRAME FORMED BY THE STILES AND RAILS OF A DOOR.

TOP MULLION - THIS IS THE VERTICAL ELEMENT OF THE DOOR THAT FORMS A DIVISION BETWEEN DIFFERENT PANELS AT THE TOP OF A DOOR. THIS IS ALSO CALLED AS FIRST MULLION.

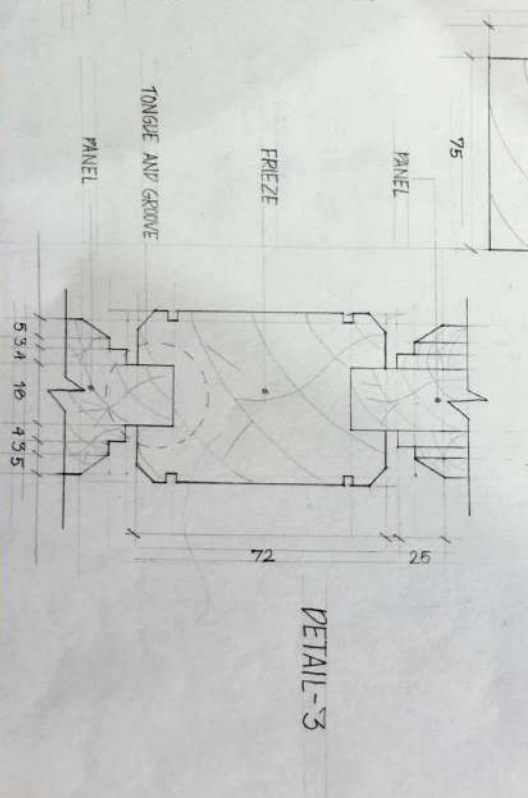
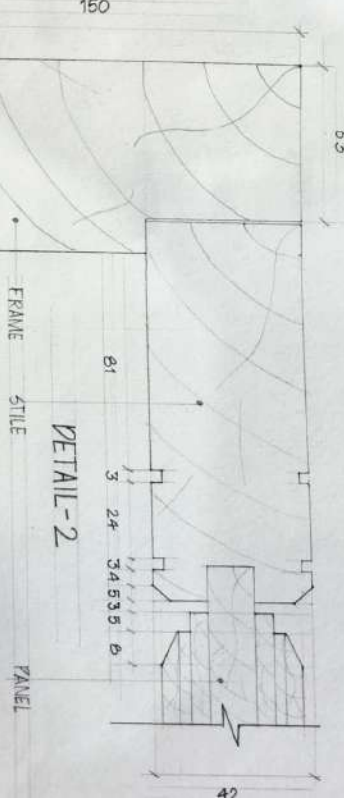
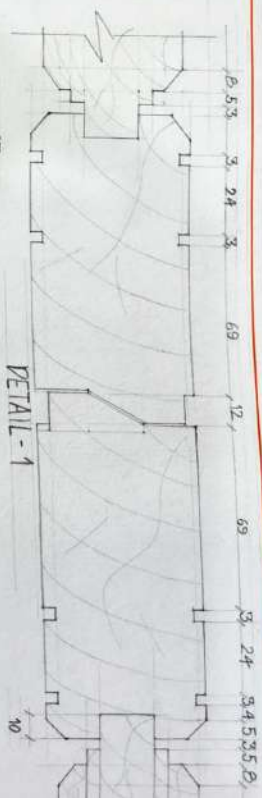
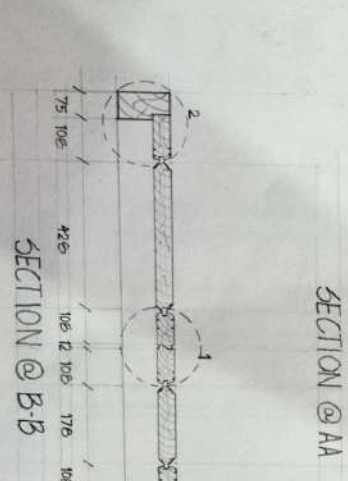
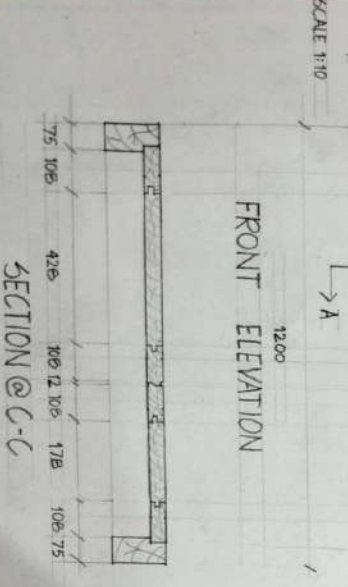
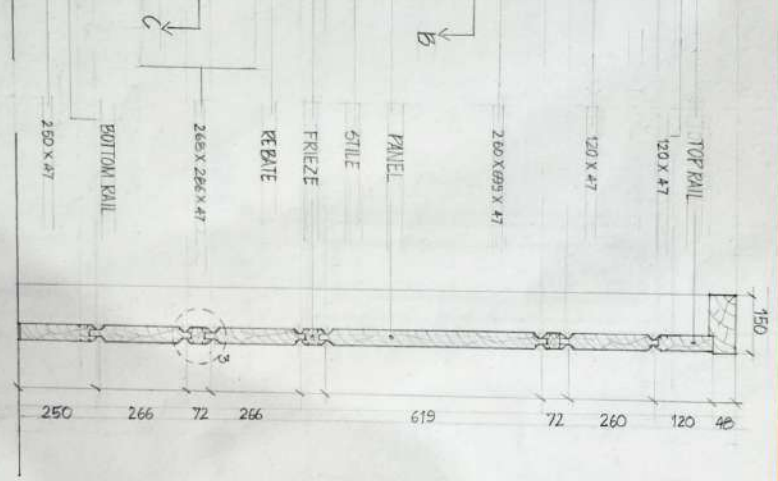
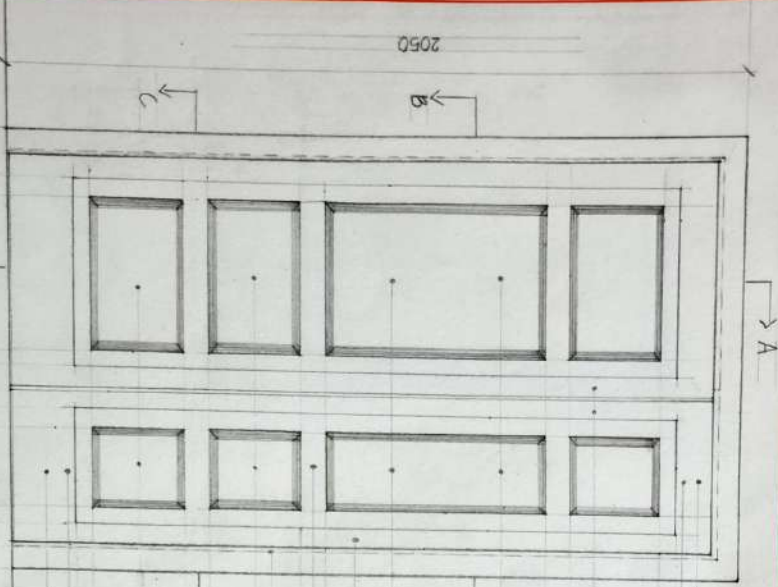
MIDDLE MULLION - THIS IS THE VERTICAL ELEMENT THAT FORMS A DIVISION BETWEEN PANELS IN THE AREA DIRECTLY BELOW THE TOP MULLION. THIS IS ALSO CALLED AS SECOND MULLION.

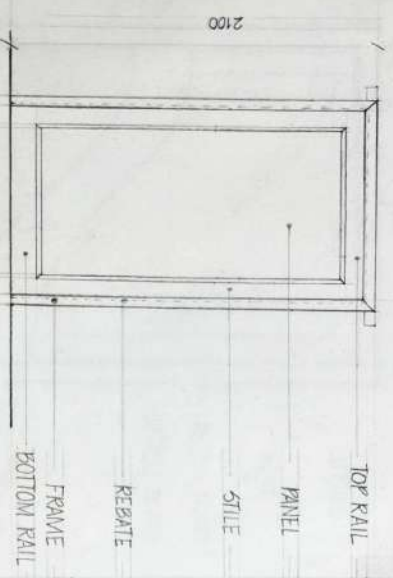
LOWER MULLION - THIS IS THE VERTICAL ELEMENT THAT FORMS A DIVISION BETWEEN PANELS IN THE AREA PRECISELY BELOW THE MID MULLION. THIS IS ALSO CALLED AS THIRD MULLION.

MOLDLING - THIS IS DECORATIVE DETAILING THAT CAN BE USED AROUND THE EDGES OF THE DOOR STILES, RAILS AND MULLIONS. IT MAY BE SIMPLE OR HIGHLY DECORATIVE LIKE CROWN MOLDLING.

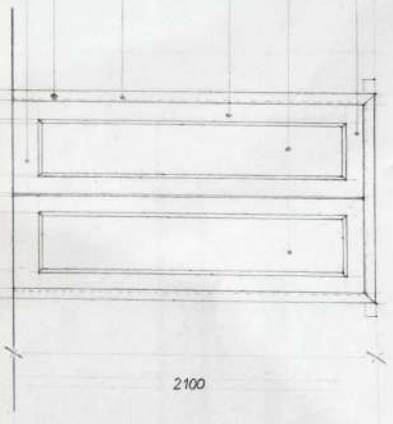
FRAME OR LINING - THE DOOR FRAME (CENTRAL) OR LINING (INTERNAL) IS WHAT THE DOOR FITS WITHIN AND COVERS THE WALL.

DOOR:-  
THE DEFINITION OF WORD "DOOR" REFERS TO  
"A MOVABLE BARRIER USED TO OPEN AND CLOSE  
THE ENTRANCE TO A SPACE."

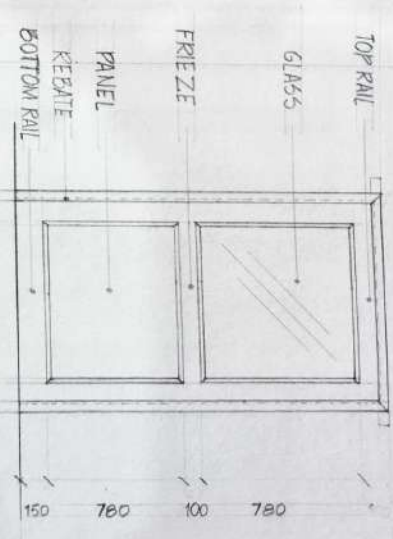




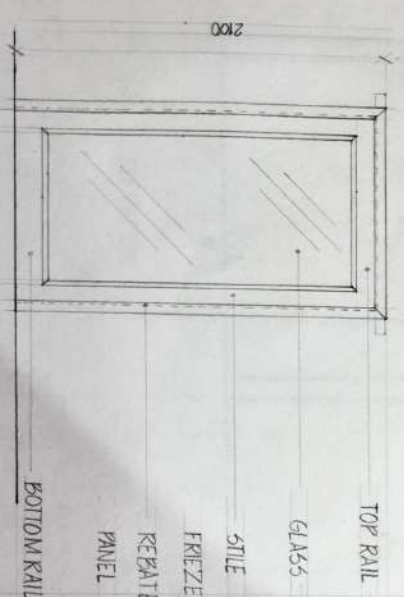
SINGLE SHUTTER SINGLE PANEL DOOR



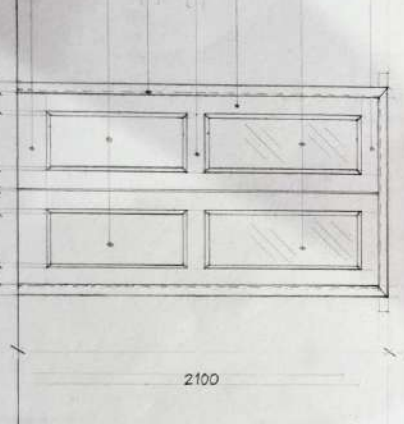
DOUBLE SHUTTER SINGLE PANEL DOOR



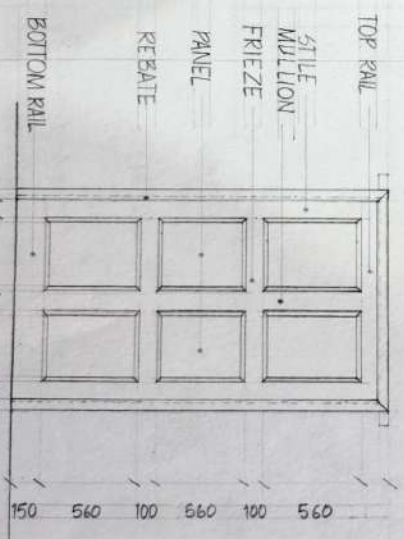
SINGLE SHUTTER PARTIALLY GLAZED PANEL DOOR



SINGLE SHUTTER FULLY GLAZED DOOR



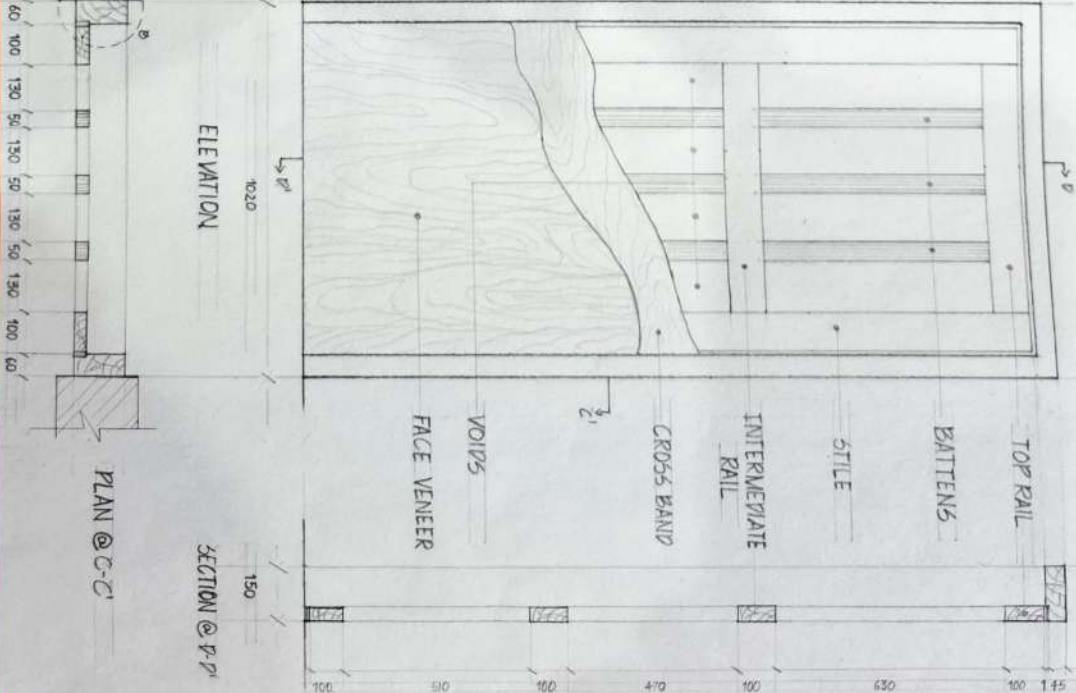
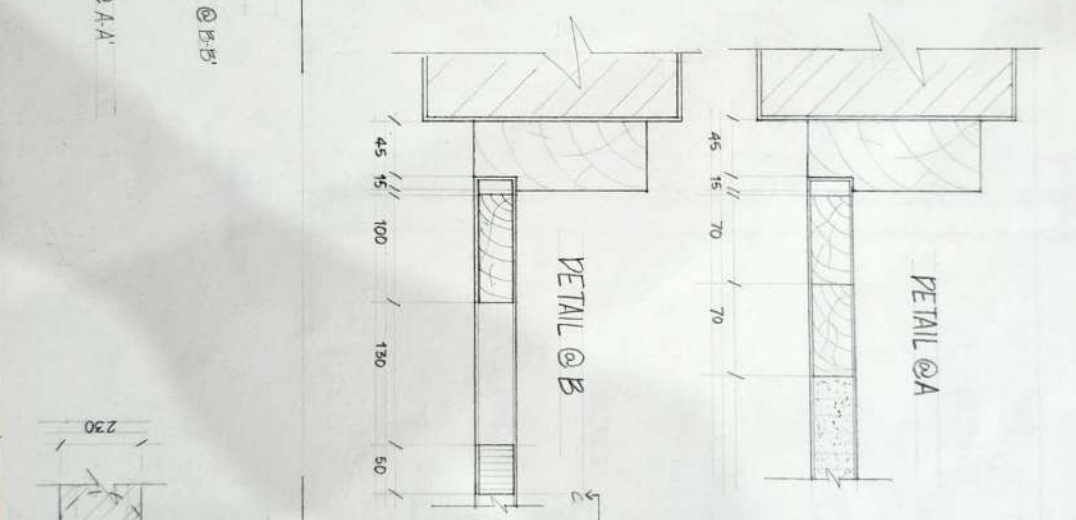
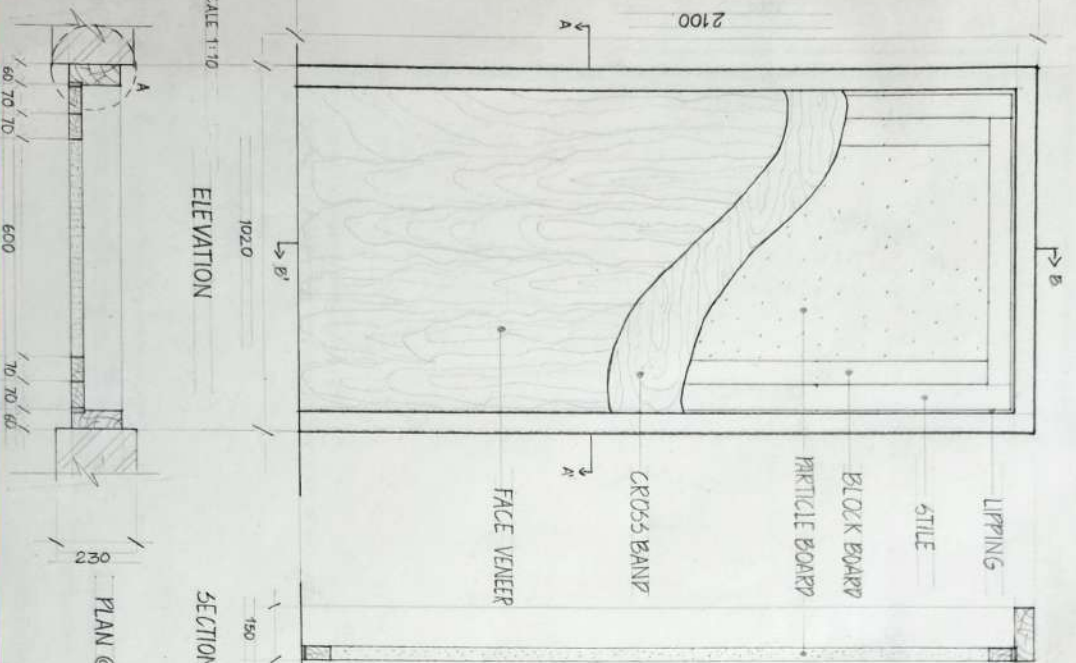
DOUBLE SHUTTER PARTIALLY GLAZED PANEL DOOR

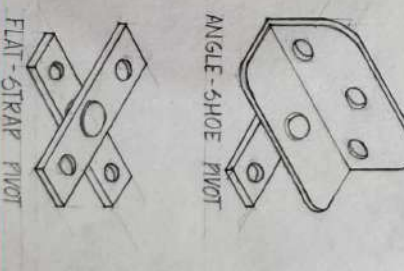
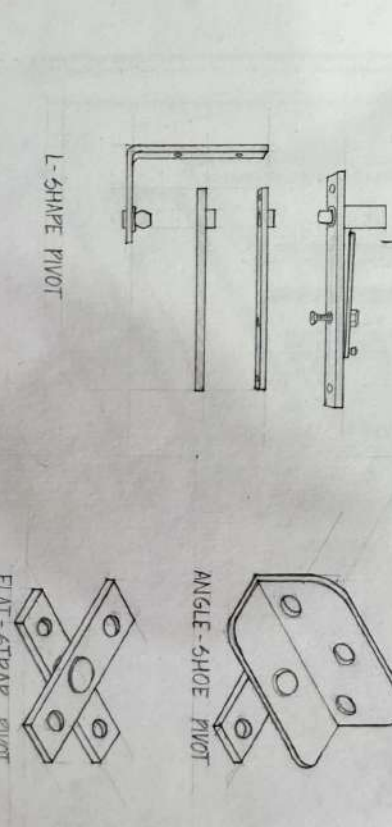
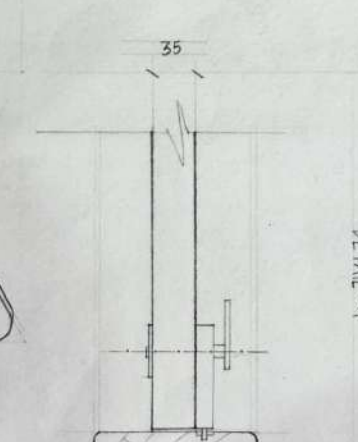
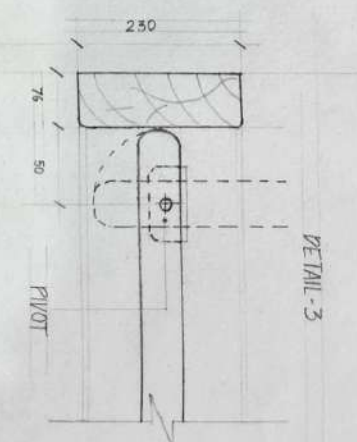
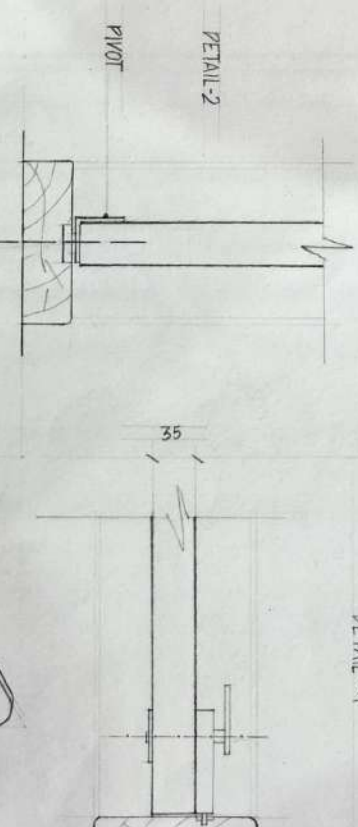
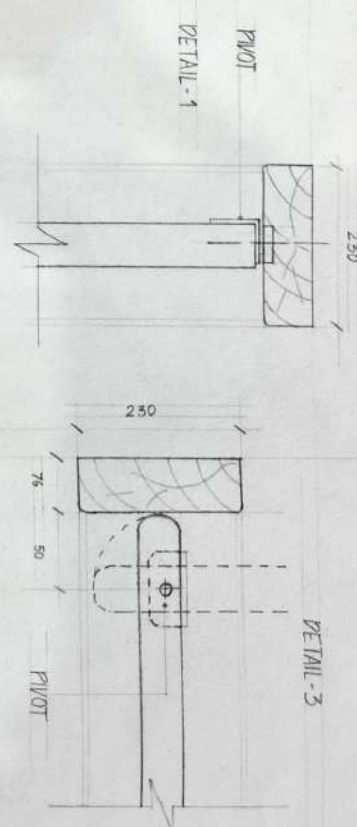
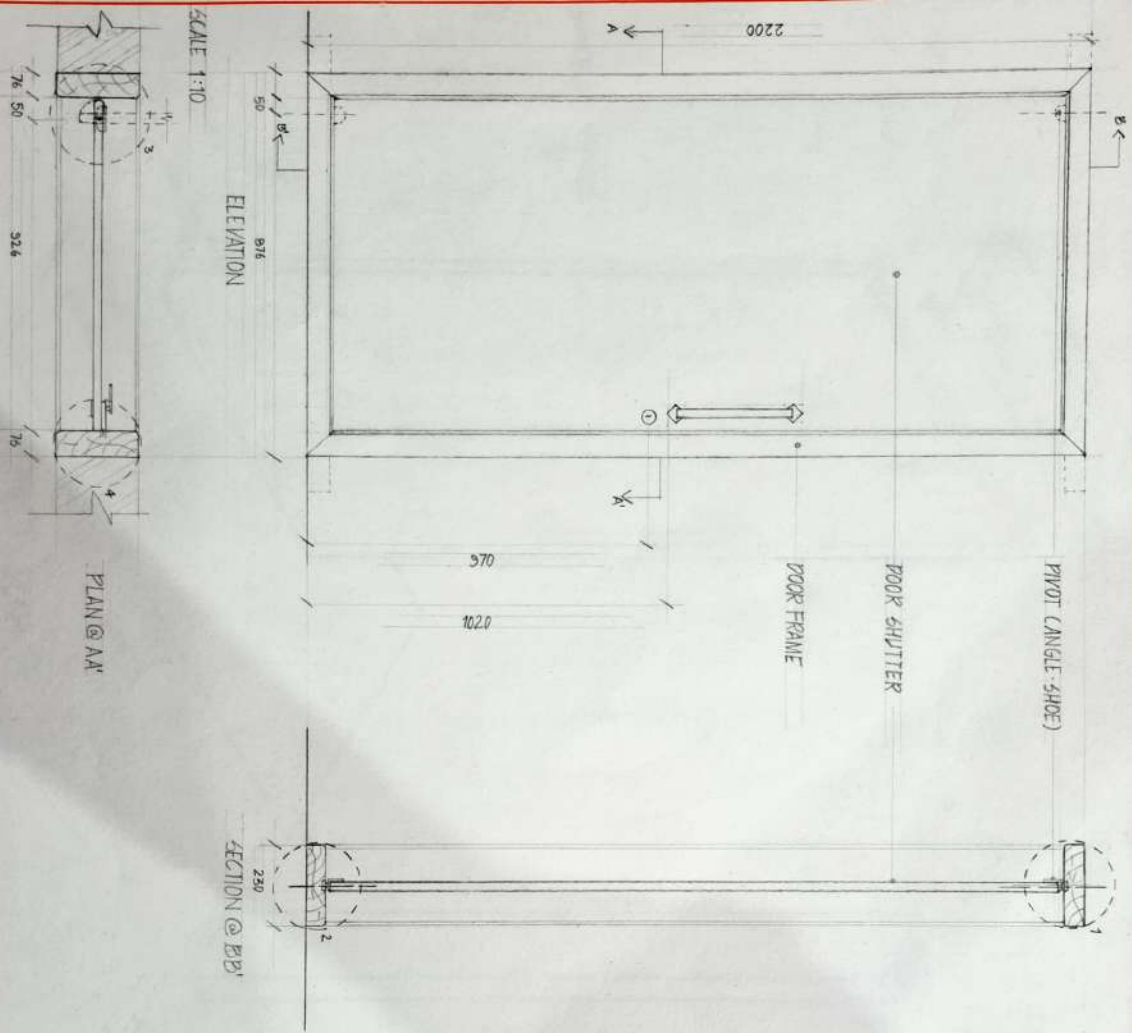


SINGLE SHUTTER SIX PANEL DOOR

# SOLID CORE FLUSH DOOR

# HOLLOW CORE FLUSH DOOR



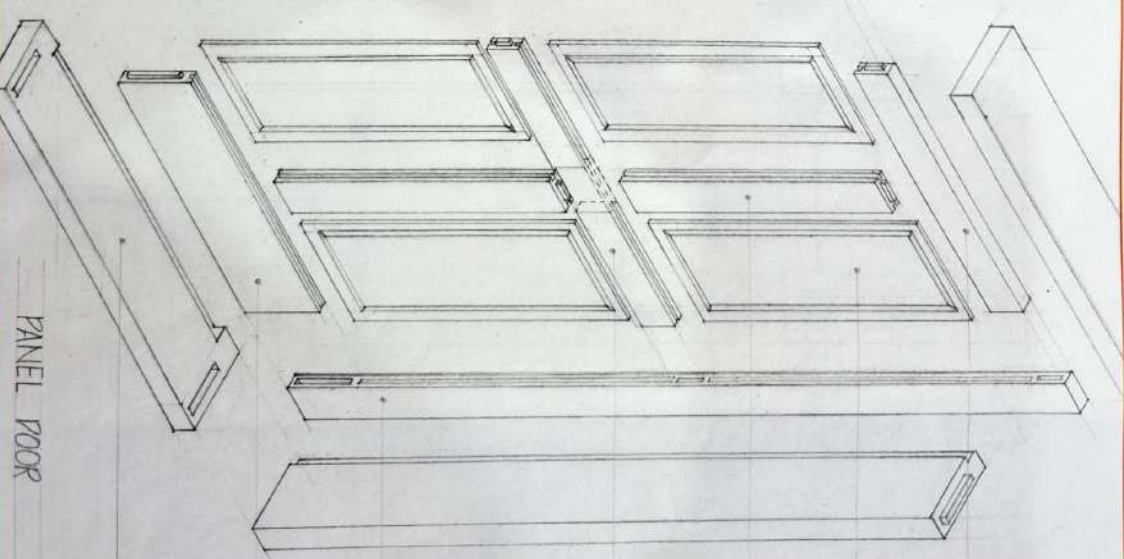
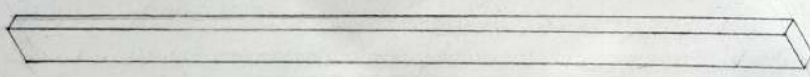
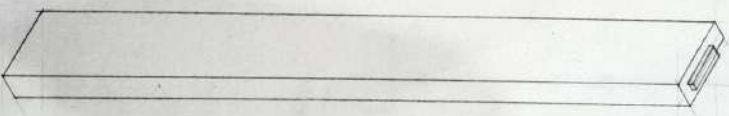
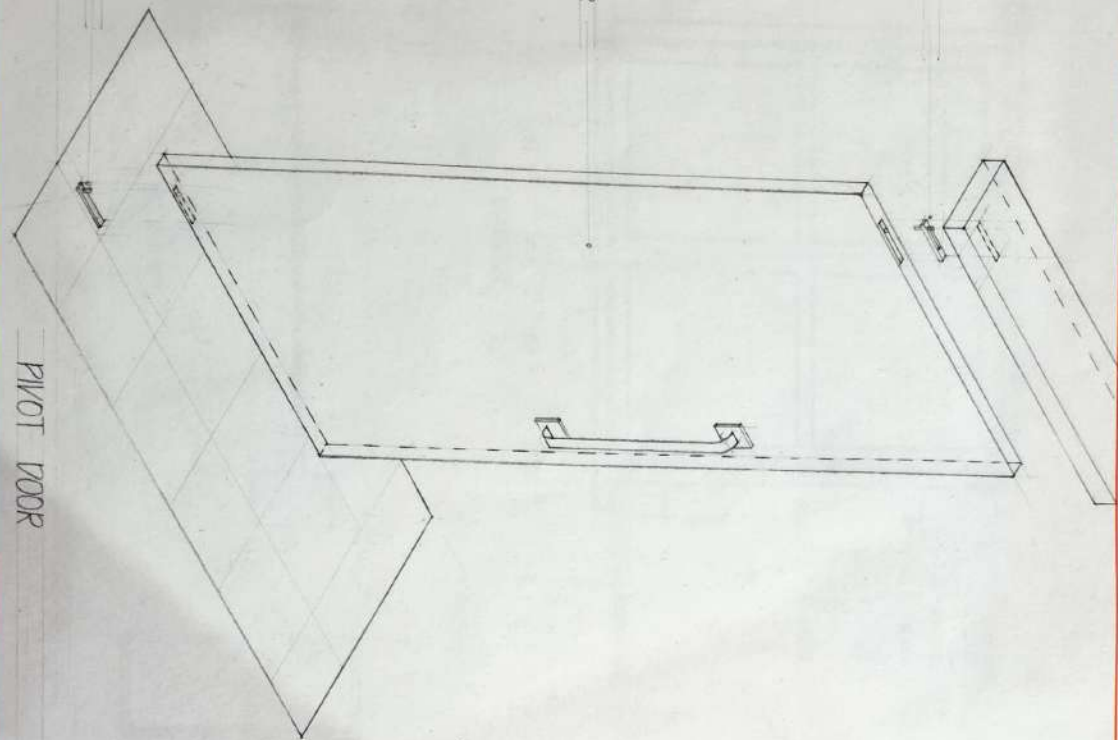


PIVOT

SHUTTER

PIVOT

PIVOT DOOR



PANEL DOOR

TOP RAIL

PANEL

MULLION

FRIEZE

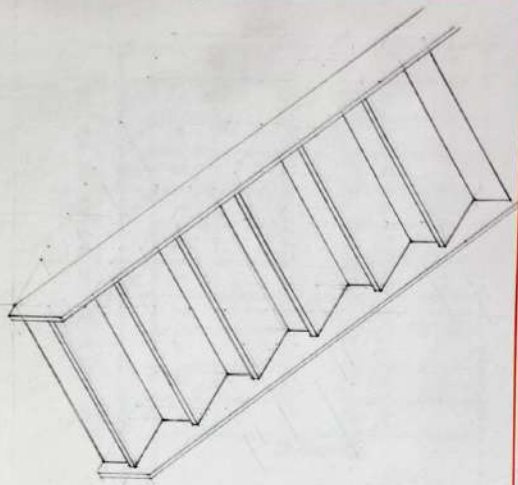
STILE

BOTTOM RAIL

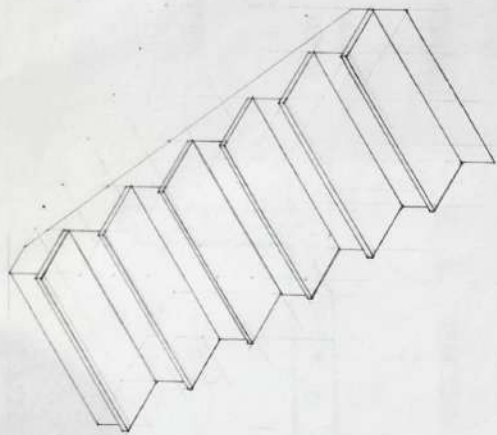
THRESHOLD



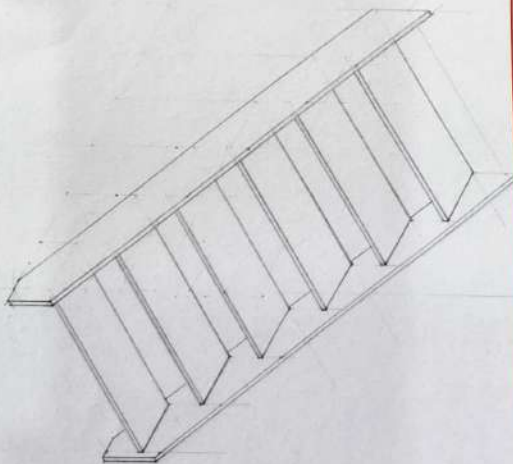




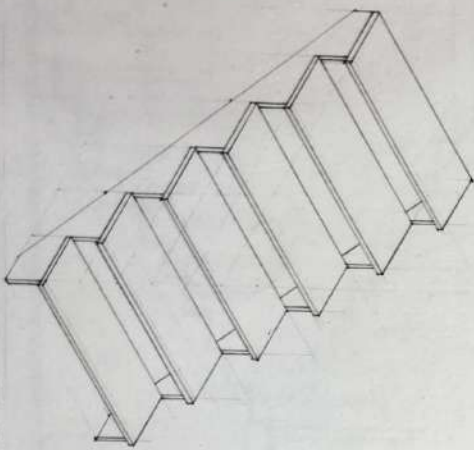
CLOSED RISERS WITH CLOSED STRINGER



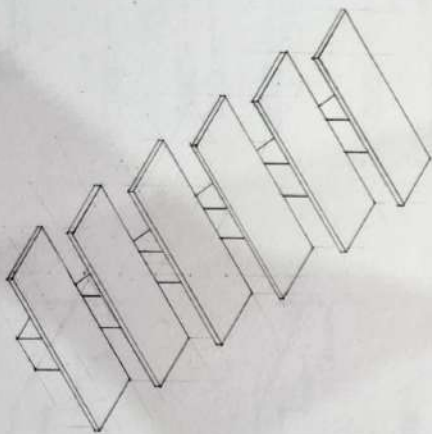
CLOSED RISER WITH SAWTOOTH STRINGER



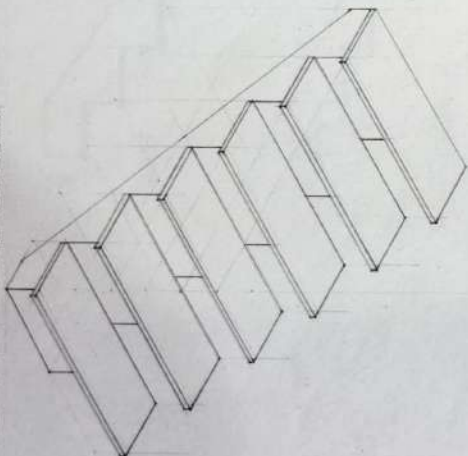
OPEN RISERS WITH CLOSED STRINGER



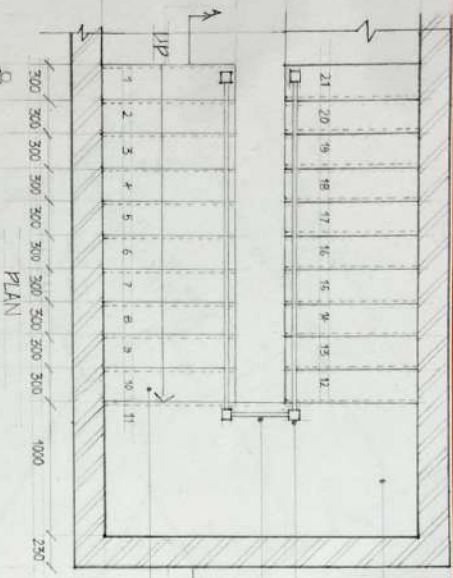
OPEN RISERS WITH SAWTOOTH STRINGER



OPEN RISERS WITH MONO STRINGER

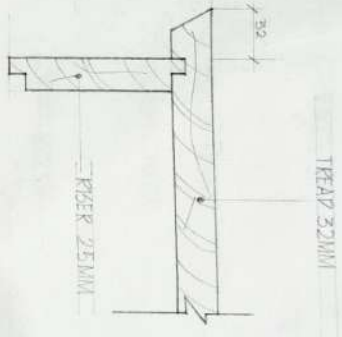


CANTILEVER BEAM'S WITH SAWTOOTH STRINGER



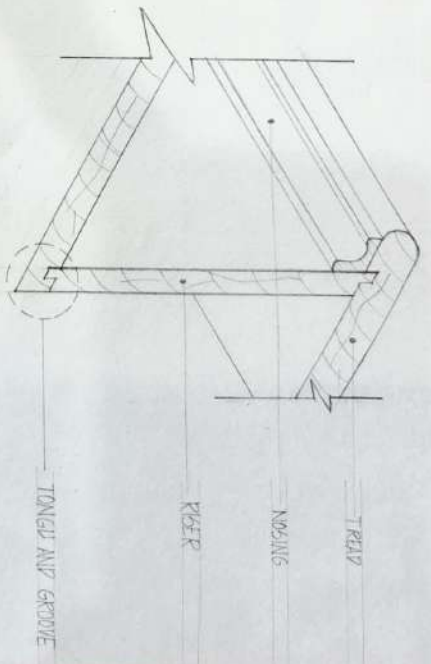
PLAN

LANDING  
NEWEL  
HANDRAIL  
STEPS



TREAD 32MM

RISER 25MM



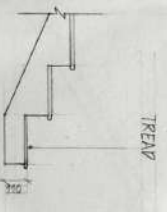
TREAD

NOBBLING

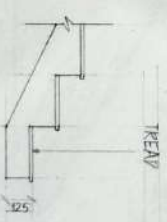
RISER

TONGUE AND GROOVE

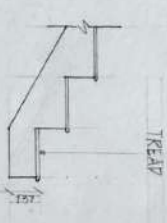
METHOD OF JOINING RISER TO TREAD



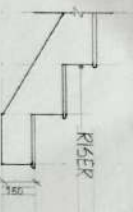
TREAD



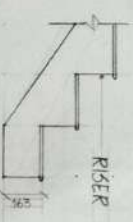
TREAD



TREAD



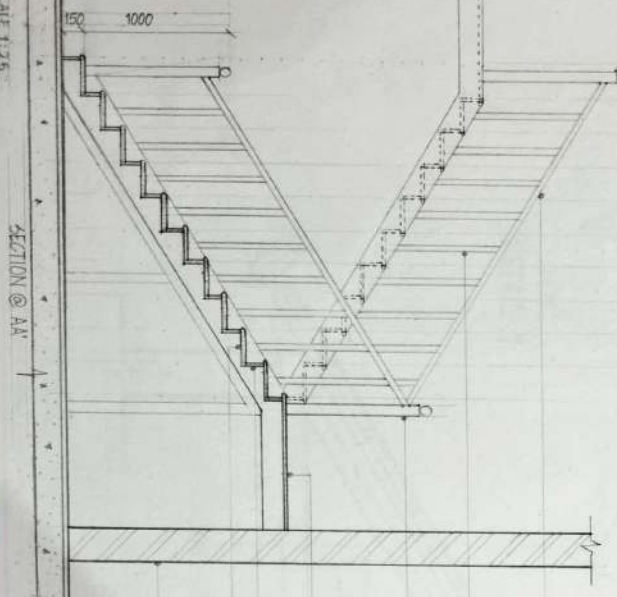
RISER



RISER



RISER



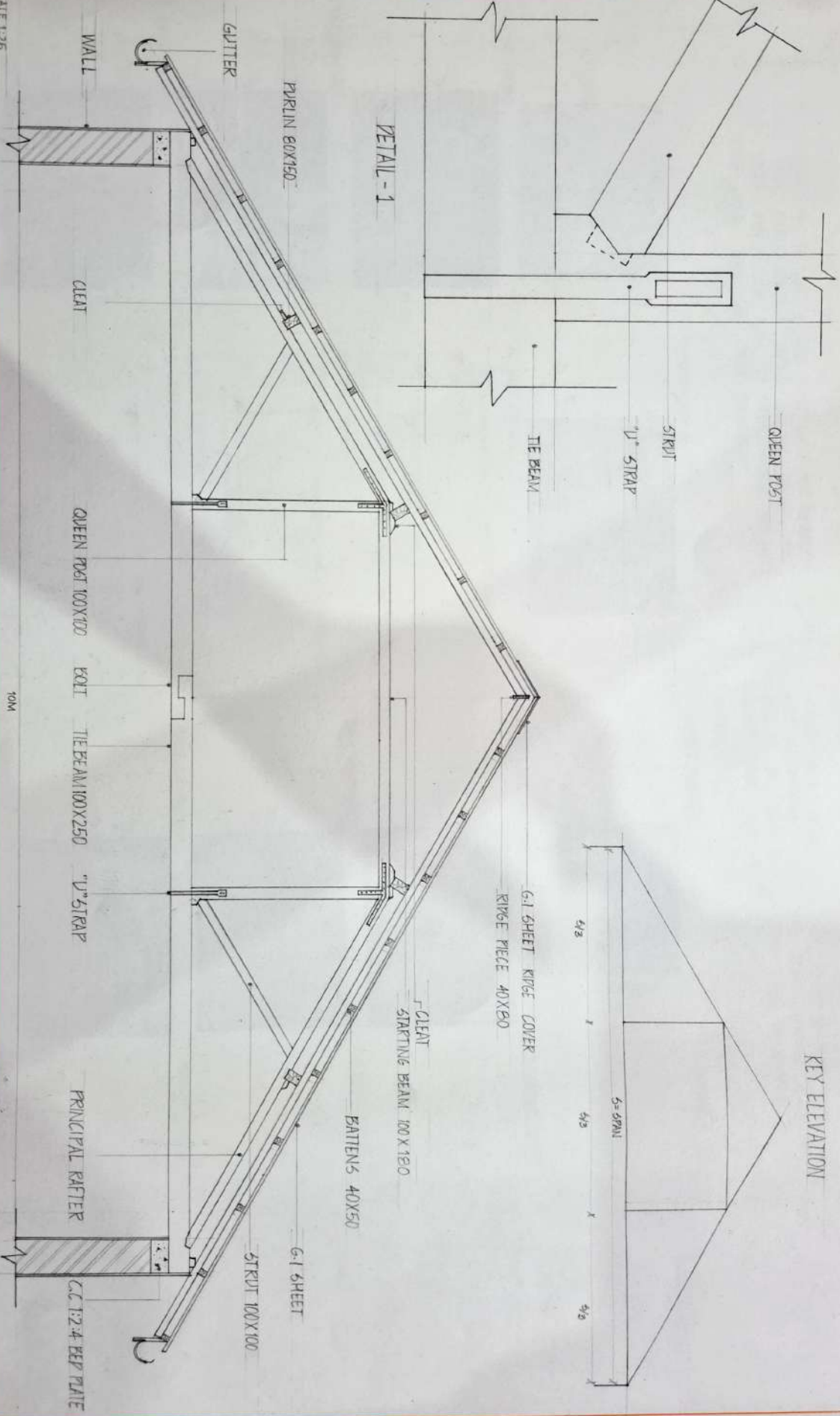
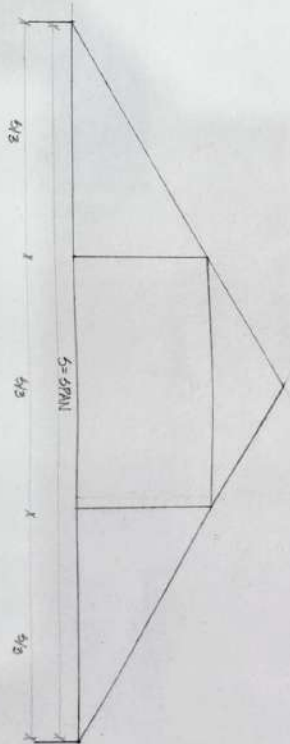
SECTION @ A-A

WALL  
RISER  
TREAD  
LANDING  
NEWEL  
BALUSTRADE  
HANDRAIL

CLOSED RISER WITH SMOOTH STRINGER SPUR CASE HAVING DIFFERENT LEVELS



# KEY ELEVATION

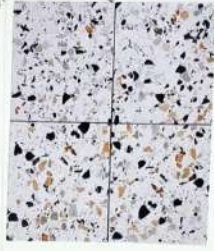


# FLOORING:

THE PURPOSE OF FLOORING IS TO GET A GOOD HARD, LEVEL AND BEAUTIFUL SURFACE FOR LIVING. THE FLOORS DIRECTLY RESTING ON THE GROUND ARE KNOWN AS GROUND FLOORS WHILE THE FLOOR OF EVERY STOREY ARE CALLED UPPER FLOORS. THESE FLOORS SHOULD HAVE GOOD DAMP RESISTANCE

PAVEMENT IS A FINING STONE, TILE, BRICK OR BRICK LIKE PIECE OF CONCRETE COMMONLY USED AS EXTERIOR FLOORING, IN A FACTORY, CONCRETE PAVES ARE MADE BY POURING A MIXTURE OF CONCRETE AND SOME TYPE OF COLORING AGENT INTO A MOLD OF SOME SHAPE AND ALLOWING TO SET.

## 1. TERRAZZO FLOORING



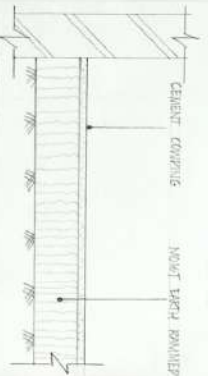
## 5. TIMBER FLOORING



## 2. CEMENT FLOORING



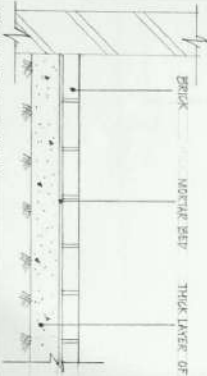
## 6. MUD FLOORING



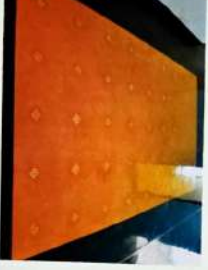
## 3. TILE FLOORING



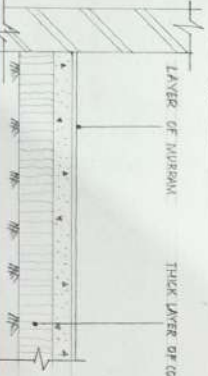
## 7. BRICK FLOORING



## 4. OXIDE FLOORING



## 8. MURRAL FLOORING



# PAVEMENT:

## 1. MARBLE PAVEMENT



## 5. FLAGSTONE PAVEMENT



## 2. INTERLOCKING PAVEMENT



## 6. COBBLESTONE PAVEMENT



## 3. BRICK PAVEMENT



## 7. CONCRETE BLOCK PAVEMENT

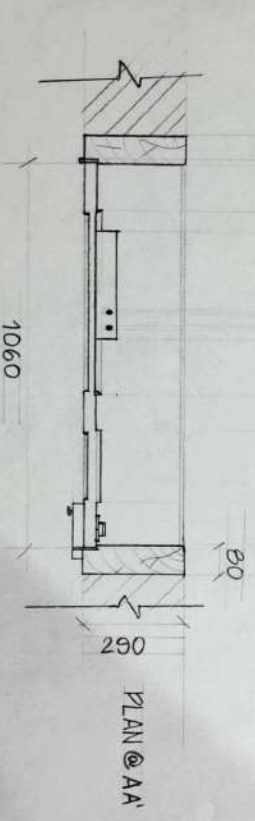


## 4. PORCELAIN PAVEMENT

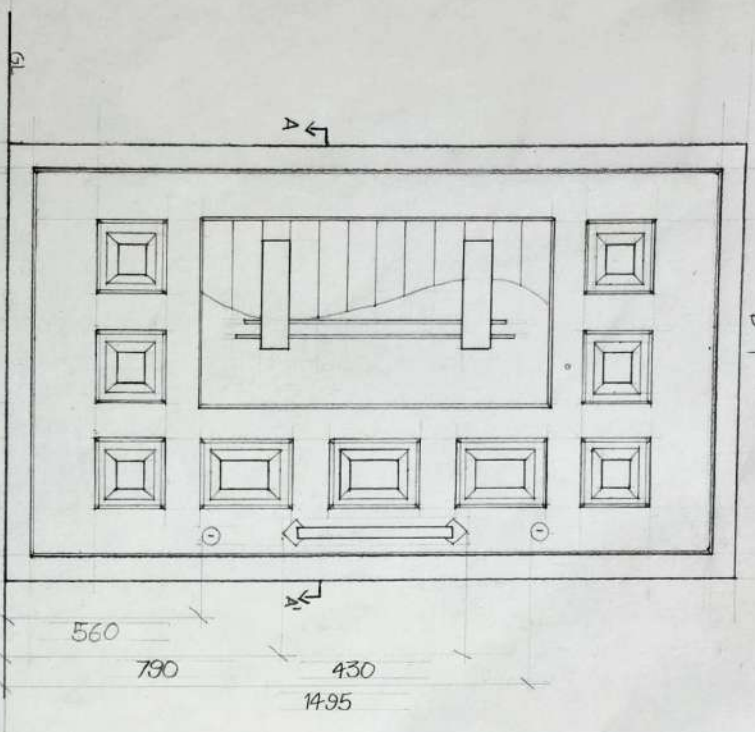


## 8. BLACK LINGSTONE PAVEMENT

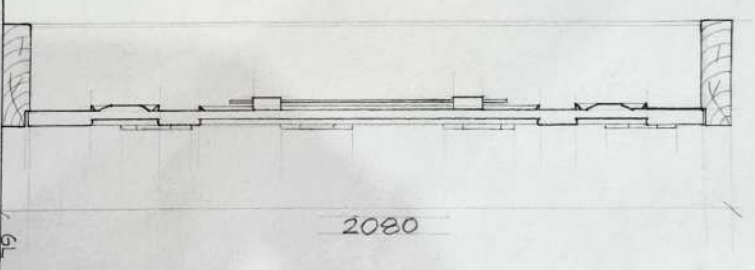




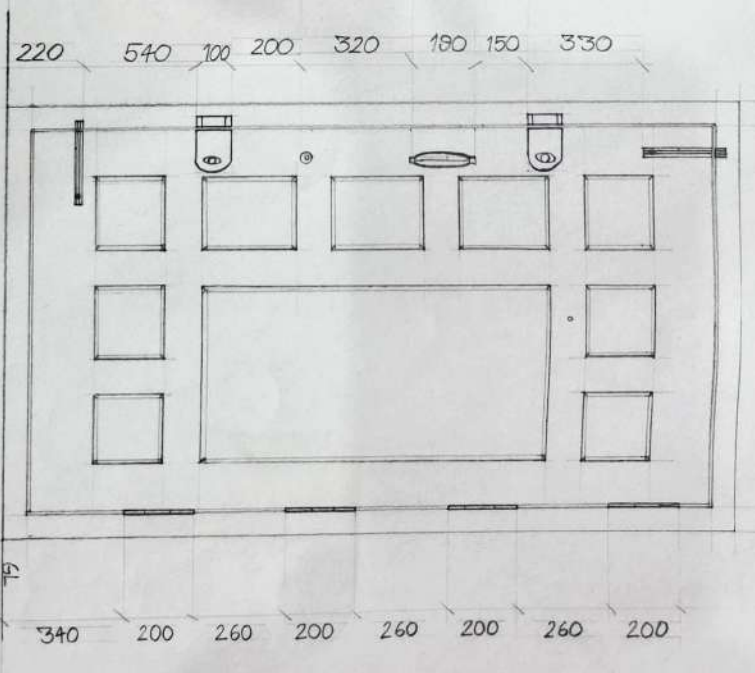
FRONT ELEVATION



SECTION @ BB



REAR ELEVATION



NOTE: SCALE 1:10  
ALL MEASUREMENTS ARE IN MM